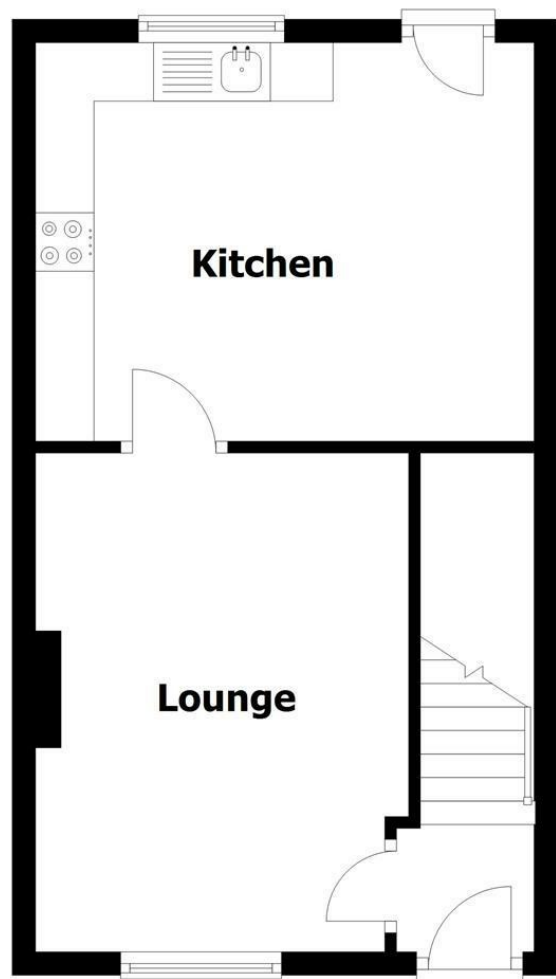
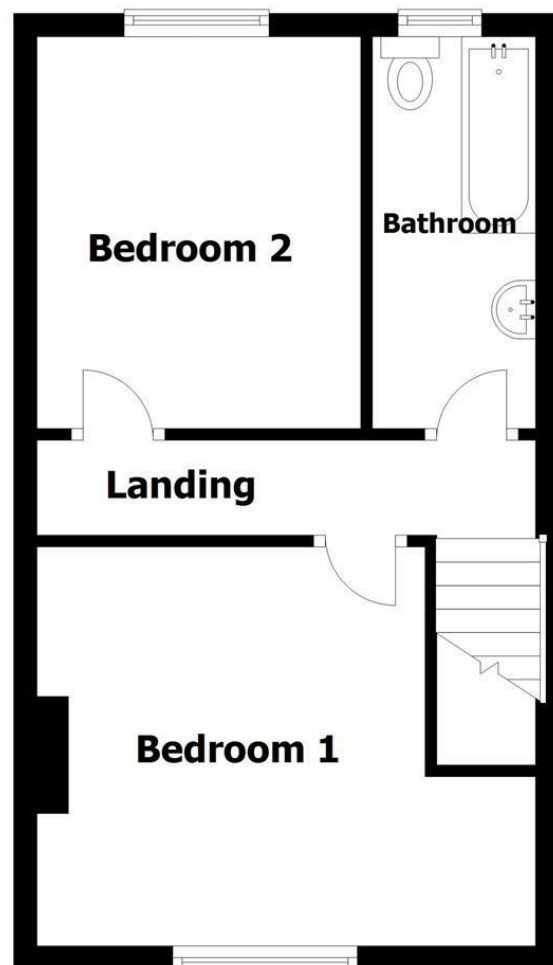


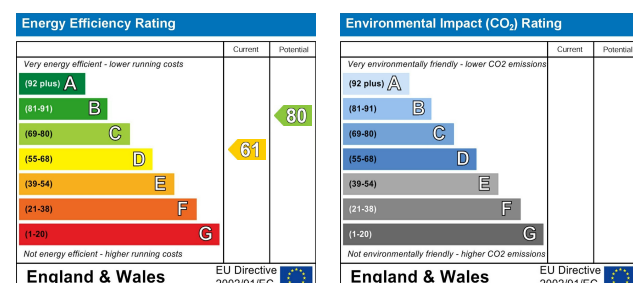
Ground Floor



First Floor



Directions



17 Cliff Mount
Ramsbottom, Bury, BL0 9EP

Offers in excess of £200,000



- Beautifully Positioned Stone Cottage
- Lounge with Log Burner, Dining Kitchen
- Bathroom Fitted With a Modern Suite
- Parking Space & Storage Shed to Rear
- Packed with Original Features & Charm
- Two Bedrooms, Stunning Views to Front
- Stone Walled Garden To the Front
- A Must See offered with No Chain

Charles Louis Homes Ltd
4 Bolton Street
Ramsbottom
Bury
BL0 9HX

CHARLES LOUIS
HOMES LIMITED

E propertyenquiries@charleslouis.co.uk
T 0161 959 0166
www.charlesloushomes.co.uk

17 Cliff Mount

Ramsbottom, Bury, BL0 9EP

*****CHARMING & BEAUTIFULLY POSITIONED STONE COTTAGE**STUNNING VIEWS OVER RAMSBOTTOM & SURROUNDING COUNTRYSIDE**TWO GOOD SIZE BEDROOMS**PARKING TO THE REAR**CHAIN FREE****

Charles Louis Homes are delighted to offer for sale this newly decorated terraced stone cottage situated on a quiet no through road with an open aspect to the front with stunning views from the first floor. Within walking distance to the town centre and all its local amenities, restaurants, bars and transport links, the property is packed with original features and benefits from having UPVC double glazing as well as gas central heating. Comprising entrance hall, lounge with a feature log burner, fitted country style kitchen, two good size bedrooms and bathroom fitted with a modern three piece suite, the cottage also offers a lovely stone walled garden to the front, and parking to the rear. With no onward chain, this is an ideal purchase for a first time buyer, buy to let investor or holiday home seeker.

Entrance

UPVC door opens into the front into a little hallway with wood flooring and stairs ascending to the first floor.

Lounge

14'1 x 14' (4.29m x 4.27m)

With a front facing UPVC window, wood flooring, centre ceiling light, feature fireplace with slate hearth and wood burning stove, radiator and power points.



Dining Kitchen

14' x 11'2 (4.27m x 3.40m)

With a rear facing UPVC window, sales tiles flooring, centre ceiling light and feature low hanging light, radiator and power points, fitted with a range of wall and base units with contrasting laminate work surfaces, inset 1.5 sink and drainer unit, electric oven with gas hob and extractor hood. plumbing for a washing machine and for a dishwasher, space for a fridge freezer, and UPVC door opening to the rear access and parking area.



First Floor Landing

Leading to Bedrooms 1 & 2 and the bathroom.

Bedroom One

13'10 x 11'1 (4.22m x 3.38m)

With a front facing UPVC window providing a stunning view over Ramsbottom, wood flooring, centre ceiling light, feature original fireplace with cast iron fire and tiled hearth, radiator and power points.



Bedroom Two

11' x 9'2 (3.35m x 2.79m)

With a rear facing UPVC window, wood flooring, centre ceiling light, storage cupboard, radiator and power points.



Bathroom

11'1 x 4'5 (3.38m x 1.35m)

Fully tiled with a rear facing UPVC glazed window, laminate wood effect flooring, spotlighting, radiator and three piece bathroom suite comprising panel enclosed bath with shower over, low flush WC and hand wash basin with pedestal.



Outside

The property benefits from having a pleasant and sunny garden to the front, whilst parking is available to the rear along with a storage shed.

