

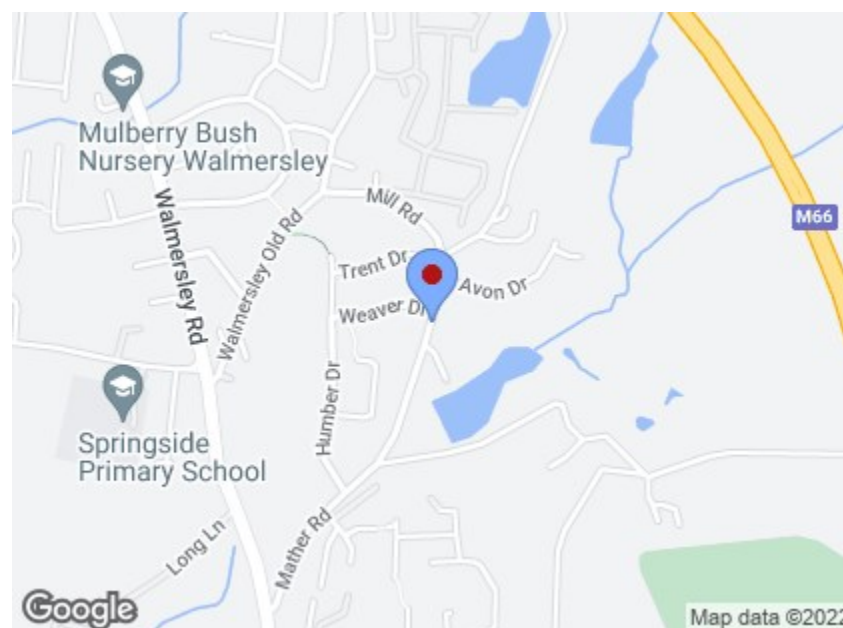


Charles Louis Commercial
4 Bolton Street
Ramsbottom
Bury
BL0 9HX

CHARLES LOUIS

C O M M E R C I A L

Email: enquiries@charleslouiscommercial.co.uk
Phone: +44 161 959 0166
www.charleslouiscommercial.co.uk



Directions

Windacre Works Development Mather Road Walmersley, Bury, BL9 6RB

Price guide £600,000

- Development Opportunity, Land For Sale
- Planning Permission For Three Detached Houses
- Location Close To Local Amenities & Transport Links
- Planning Application Ref: 64651
- Semi Rural & Waterside Views Close To Ramsbottom & Bury Town Centre
- Please Contact Anthony For Further Information.

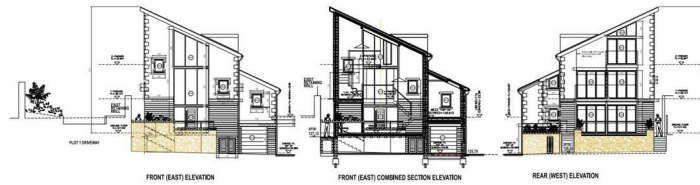
These particulars, whilst believed to be accurate are set out as a general outline only for guidance and do not constitute any part of an offer or contract. Intending purchasers should not rely on them as statements of representation of fact, but must satisfy themselves by inspection or otherwise as to their accuracy. No person in this firm's employment has the authority to make or give any representation or warranty in respect of the property.

Windacre Works Development Mather Road

Walmersley, Bury, BL9 6RB

*****FANTASTIC DEVELOPMENT OPPORTUNITY****LAND FOR SALE WITH PLANNING PERMISSION FOR THREE DETACHED HOUSES**SET IN A DESIRABLE & POPULAR LOCATION**VIEWS OVER COUNTRYSIDE & LAKE***Charles Louis Commercial Agents are please to bring to the market this fantastic development opportunity which has planning permission for three detached houses with rural & waterside views, located close to Ramsbottom & Bury Town Centre. Planning Application Reference Number: 64651.
Please contact Anthony Meadowcroft on 07548 342 394 for further details on Windacre Works.

Plot Sample One



Plot Sample Two



View of Development



Alternative Views

Alternative View

Site View



Alternative View



Views Over Countryside



Views Over Countryside & Lake

