

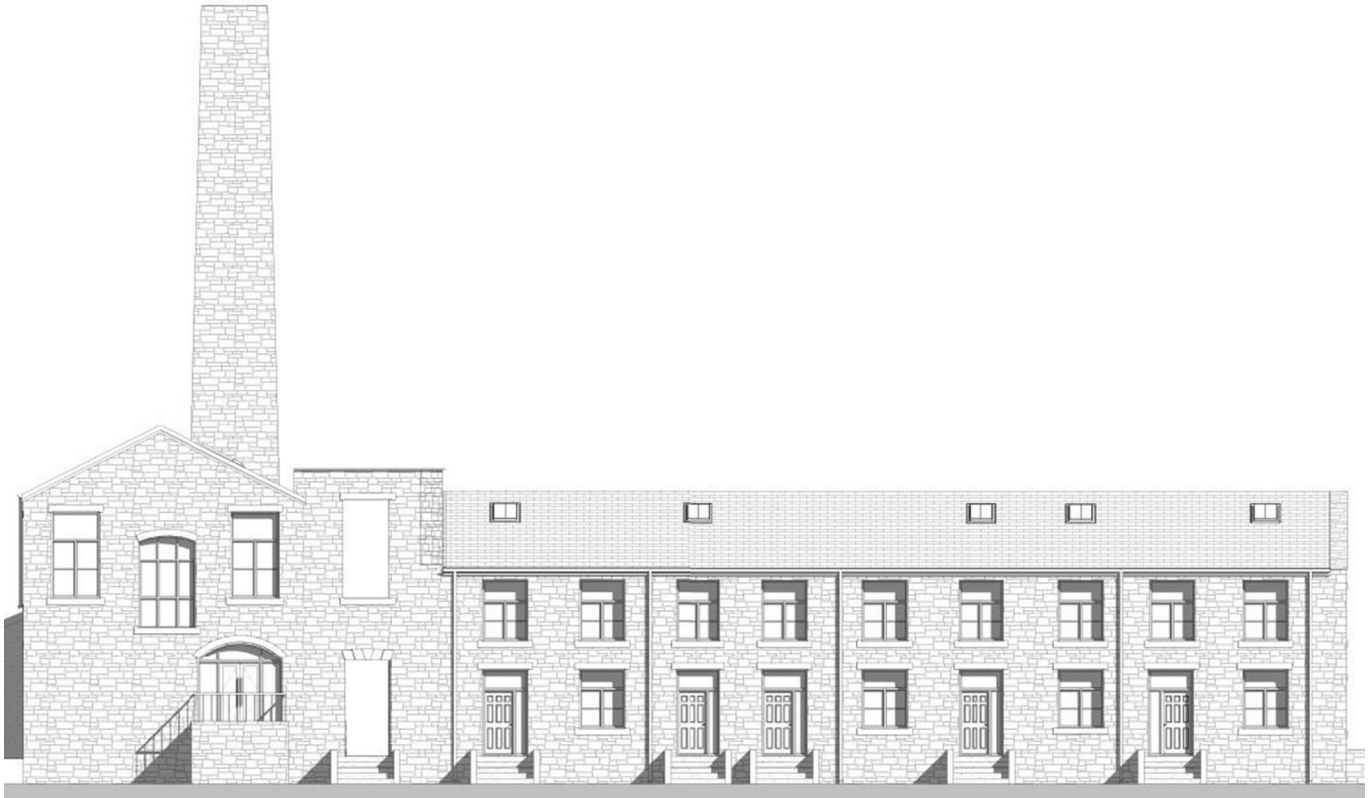


Charles Louis Homes Ltd
4 Bolton Street
Ramsbottom
Bury
BL0 9HX

CHARLES LOUIS

HOMES LIMITED

E propertyenquiries@charleslouis.co.uk
T 0161 959 0166
www.charleslouishomes.co.uk



21 John Hallows Way, Burnley, BB12 9JL

Price £300,000



A MUST SEE!!!**A PRESTIGIOUS COLLECTION OF TEN THREE BEDROOM TOWNHOUSES IN SPENBROOK MILL**FINISHED TO A HIGH STANDARD, WITH STUNNING COUNTRYSIDE VIEWSCharles Louis Homes are pleased to bring to the market 10 three bedroom townhouses in a converted mill, set over three levels.

Discover the fantastic countryside location and these ten three storey townhouses, finished to the highest specifications. Spenbrook sits beautifully in the sweeping countryside of Pendle in an area of outstanding natural beauty. It is a prestigious development set in and around the charming 19th century cotton mill. The townhouses benefit from open plan kitchen/diner and family room downstairs with downstairs wc and french doors opening into the garden with panoramic views. To the first floor, there are two double bedrooms with family bathroom and to the second floor is a master bedroom with some of the townhouses having an en-suite and dressing room. Externally there is a private garden and allocated parking for two vehicles, with visitors parking also.

Located in the Pendle district of Lancashire, a home at Spenbrook provides a rural and peaceful location whilst remaining only minutes from the villages of Padiham and Barley and the bustling market town of Burnley. Spenbrook offers the best of both worlds, promising an idyllic location for family life as well as being connected and accessible for all major commuter routes.

Please call Charles Louis Homes office for full information & to register your interest on 0161 959 0166.

- A Prestigious Collection Of Ten Converted Town Houses
- Three Bedrooms & Dressing Area
- Open Plan Kitchen, Dining & Family Room
- Rear Garden With Allocated Parking
- Set Over Three Levels & Finished To A High Standard
- Stunning Views Overlooking Countryside
- Family Bathroom & Downstairs WC
- A Must See!!! To Appreciate High Standard Finish, Location & Charm Of Development

