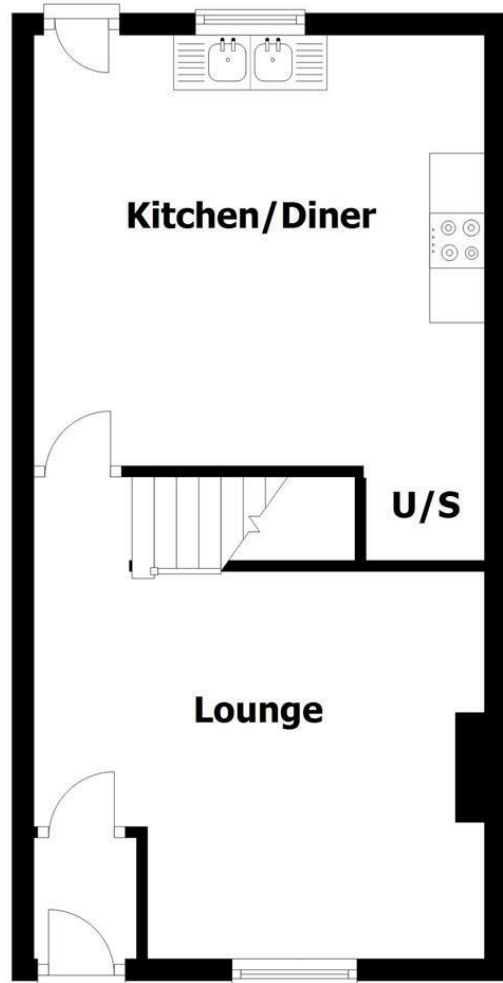
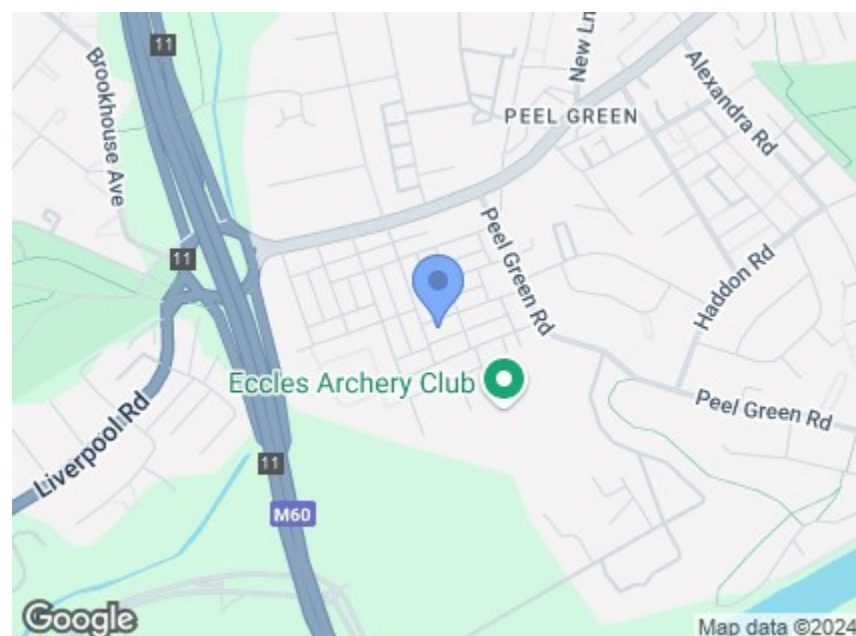
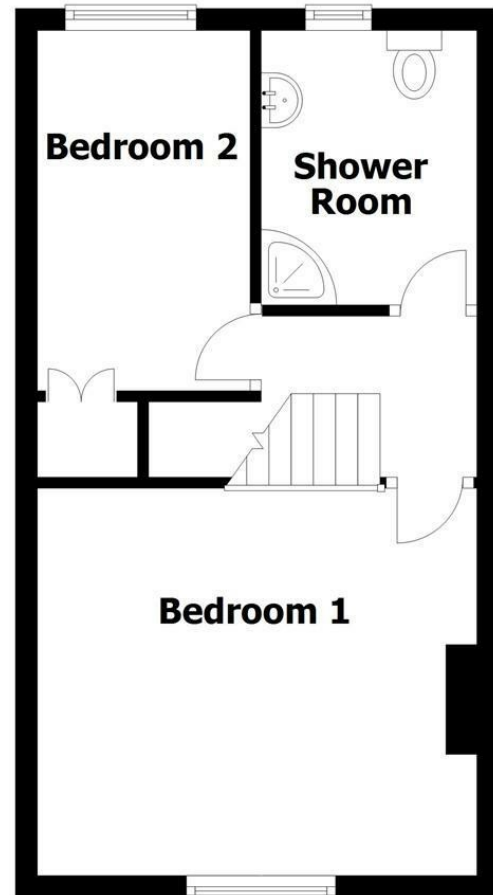


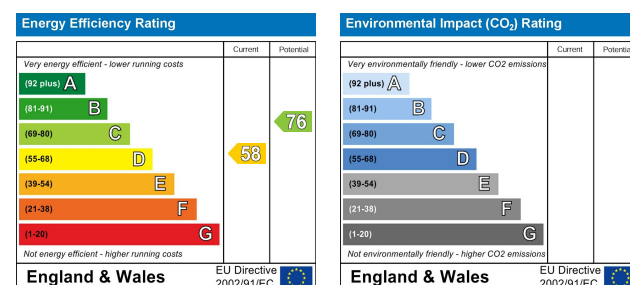
Ground Floor



First Floor



Directions



41 Stelfox Street
 Eccles, Manchester, M30 7DH
£925 Per month



- Well Presented Terraced Property
- Just minutes from the M60
- Two Good Size Bedrooms & Shower Room
- Offered Partly Furnished & Available Late July
- Much Sought After Location
- Lounge & Dining Kitchen to Ground Floor
- A Sunny & Enclosed Rear Garden
- Early Enquiry Essential to Secure a Viewing

Charles Louis Homes Ltd
 4 Bolton Street
 Ramsbottom
 Bury
 BLO 9HX

CHARLES LOUIS
 HOMES LIMITED

E propertyenquiries@charleslouis.co.uk
 T 0161 959 0166
 www.charleslouishomes.co.uk

These particulars, whilst believed to be accurate are set out as a general outline only for guidance and do not constitute any part of an offer or contract. Intending purchasers should not rely on them as statements of representation of fact, but must satisfy themselves by inspection or otherwise as to their accuracy. No person in this firm's employment has the authority to make or give any representation or warranty in respect of the property.

41 Stelfox Street

Eccles, Manchester, M30 7DH

WELL PRESENTED, PARTLY FURNISHED AND IDEALLY POSITIONED FOR MOTORWAY AND TRANSPORT LINKS. Situated in the ever sought after Eccles area of Salford, this well presented property is available to occupy immediately. Comprising in brief; entrance vestibule opening to the lounge and onwards to the dining kitchen fitted with electric oven and hob and furnished with a washing machine, dryer and dishwasher. To the rear the property offers an enclosed and sunny garden. This property is well worth a viewing and we expect it to generate much interest therefore early enquiry is strongly encouraged to avoid disappointment.

Entrance Vestibule

A front facing UPVC door opens into the entrance vestibule with an inner door opening into;

Lounge

13'5 (max) x 11'2 (4.09m (max) x 3.40m)

With a front facing UPVC window, feature fireplace with an electric fire, radiator, TV point, telephone point and power points.

Dining Kitchen

13'6 x 11'2 (4.11m x 3.40m)

With a rear facing UPVC window, radiator, telephone point and power points, fitted with a range of wall and base units with contrasting work surfaces and inset double sink, integrated oven and electric hob with extractor hood, plumbing for a dishwasher and a washing machine, space for a fridge freezer and a dryer, and a rear UPVC door opening to the garden.

First Floor Landing

Leading to Bedrooms One and Two and Shower Room.

Bedroom One

13'3 x 11'3 (4.04m x 3.43m)

With a front facing UPVC window, radiator and power points.

Bedroom Two

11'2 x 6'7 (3.40m x 2.01m)

With a rear facing UPVC window, built in walk-in wardrobe, radiator, telephone point and power points.

Shower Room

8'3 x 6'5 (2.51m x 1.96m)

Partly tiled with a rear facing UPVC opaque window, radiator, walk in shower unit, low flush WC and hand wash basin.

Rear Garden

An enclosed and sunny rear garden mainly paved for low maintenance, featuring a patio area, plant and shrub borders and external lighting and water supply.

