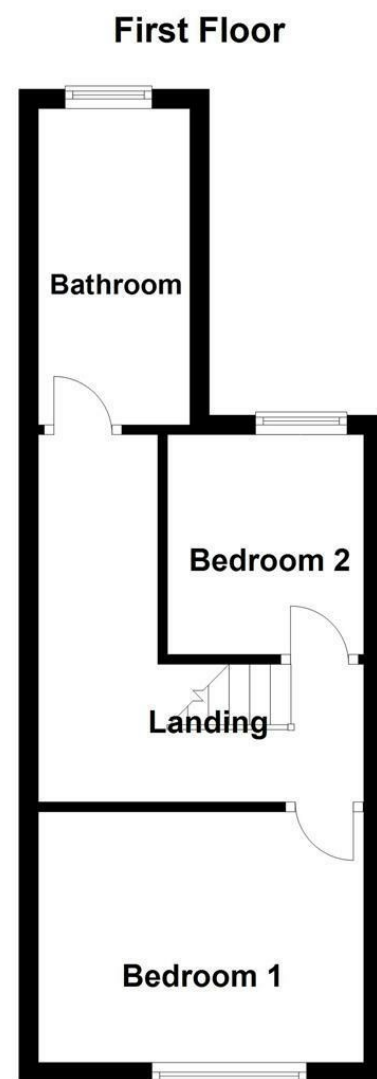
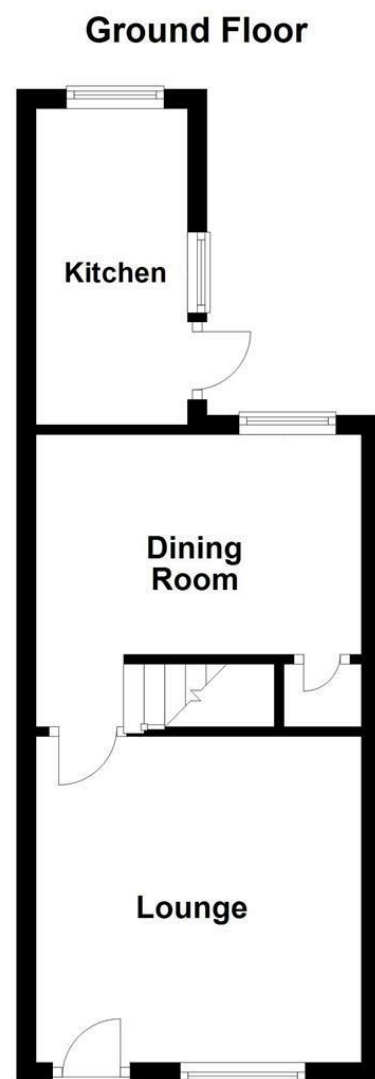




CHARLES LOUIS

HOMES LIMITED



Directions

Energy Efficiency Rating		Environmental Impact (CO ₂) Rating	
Current	Potential	Current	Potential
78	82		

EU Directive 2002/91/EC

250 Bolton Road West
Ramsbottom, Bury, BL0 9PX

£950 Per month



- Well Presented Mid Terraced Cottage
- Sought After Position in Ramsbottom
- Lounge, Dining Room & Separate Kitchen
- Two Bedrooms Plus Stylish Bathroom
- Offered Unfurnished, Available Start of Feb
- Early Enquiry Strongly Encouraged

These particulars, whilst believed to be accurate are set out as a general outline only for guidance and do not constitute any part of an offer or contract. Intending purchasers should not rely on them as statements of representation of fact, but must satisfy themselves by inspection or otherwise as to their accuracy. No person in this firm's employment has the authority to make or give any representation or warranty in respect of the property.

250 Bolton Road West

Ramsbottom, Bury, BL0 9PX

A well appointed and very well presented mid terraced cottage in Ramsbottom close to local amenities and within walking distance of the town centre.

Offered unfurnished and available from the beginning of February, this property comprises in brief lounge, dining room and stylish separate kitchen to the ground floor, with two bedrooms and house bathroom to the first. To the rear of the property there is a private yard whilst parking is usually available on street to the front.

Early enquiry strongly recommended to avoid disappointment. Call now to arrange your accompanied viewing.

[Lounge](#)

[Dining Room](#)

[Kitchen](#)

[First Floor Landing](#)

[Bedroom One](#)

[Bedroom Two](#)

[Bathroom](#)

[Rear Yard](#)

Council Tax Band B